

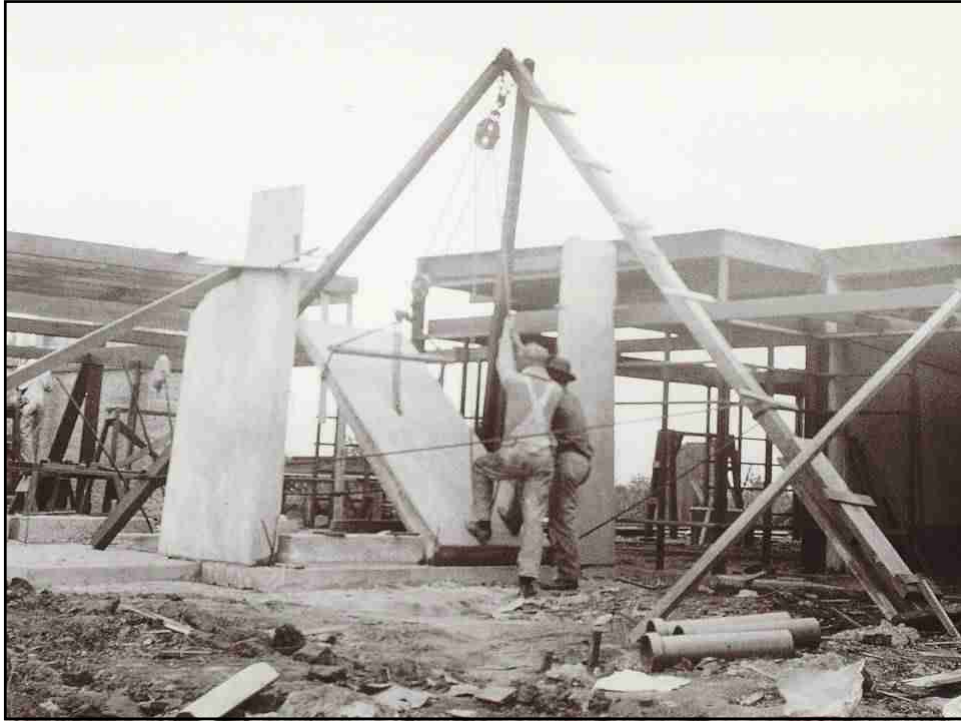
change - progress

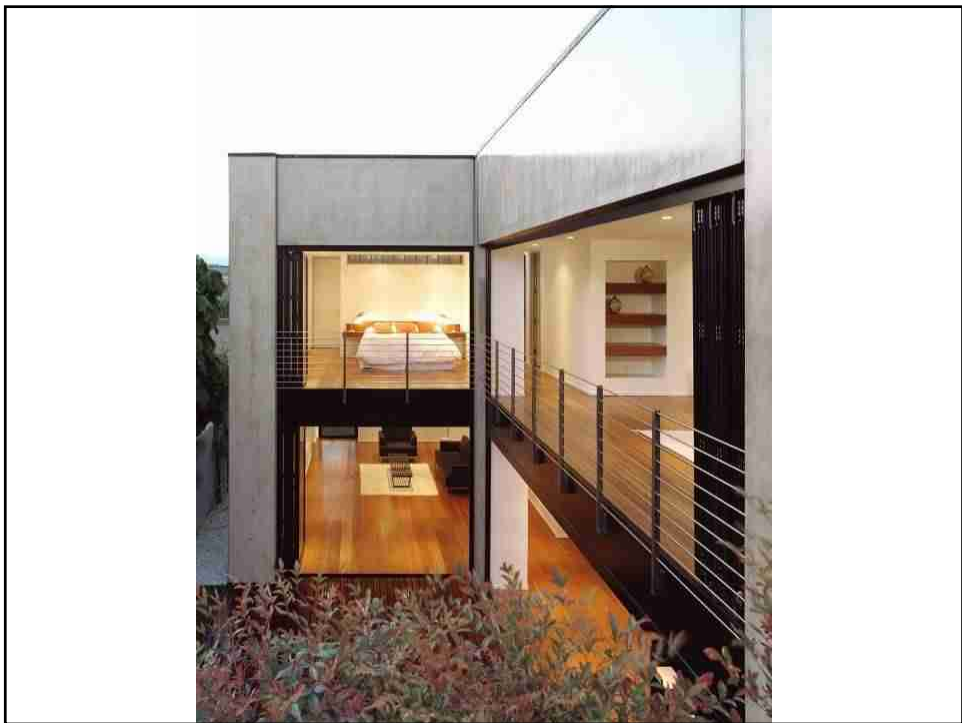


prefab

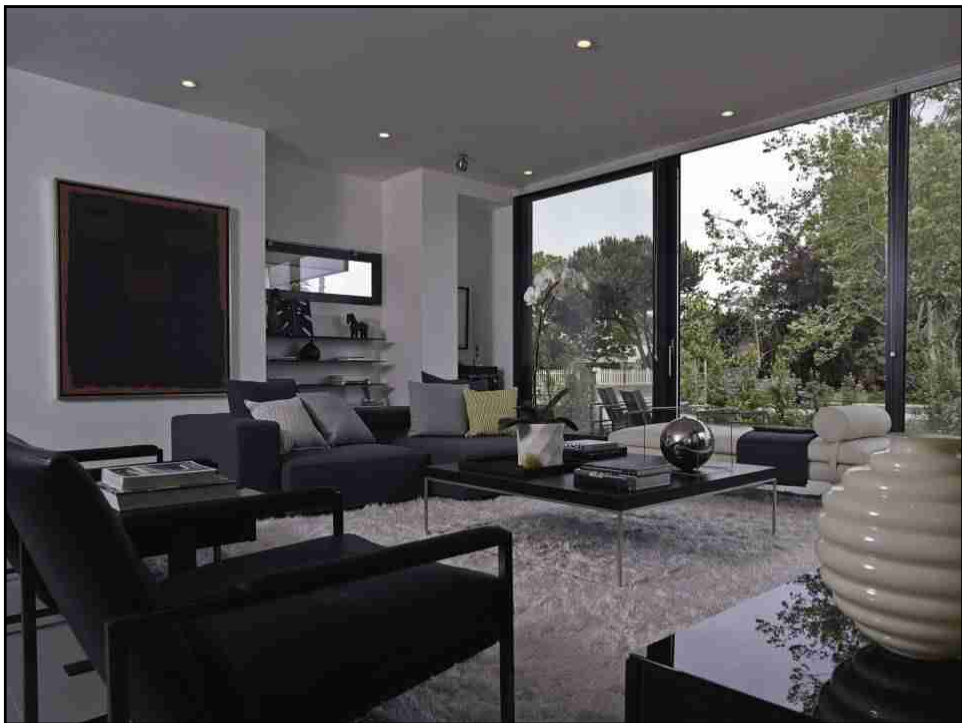
why

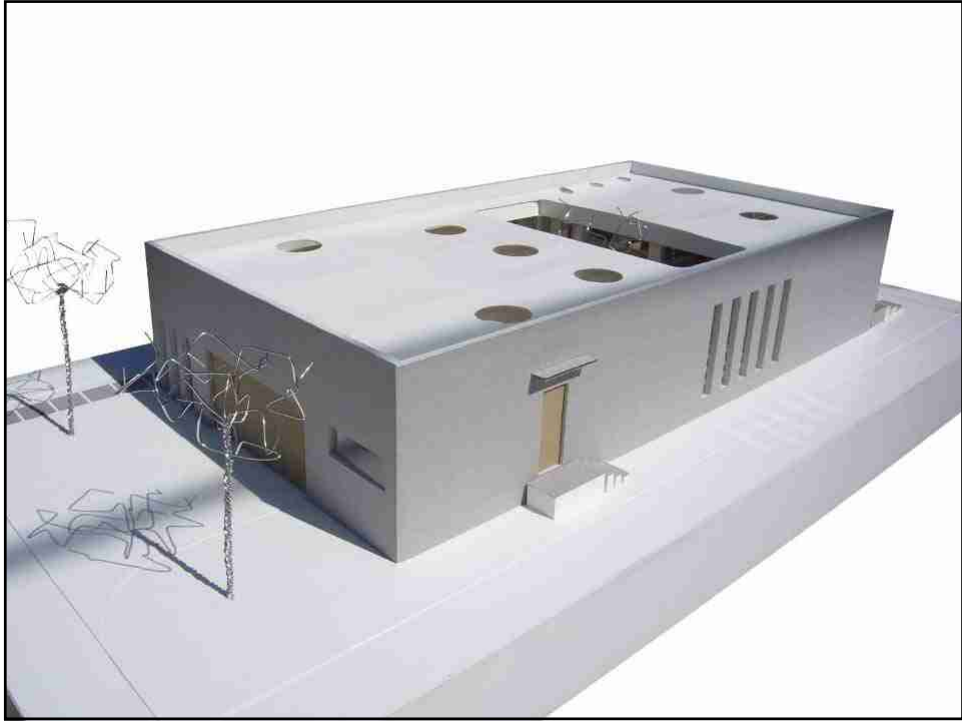
- Reduce construction waste
- Bigger precision / better detail solutions
- Higher quality control
- Faster / reduce construction time
- Higher Cost control / minimal change orders

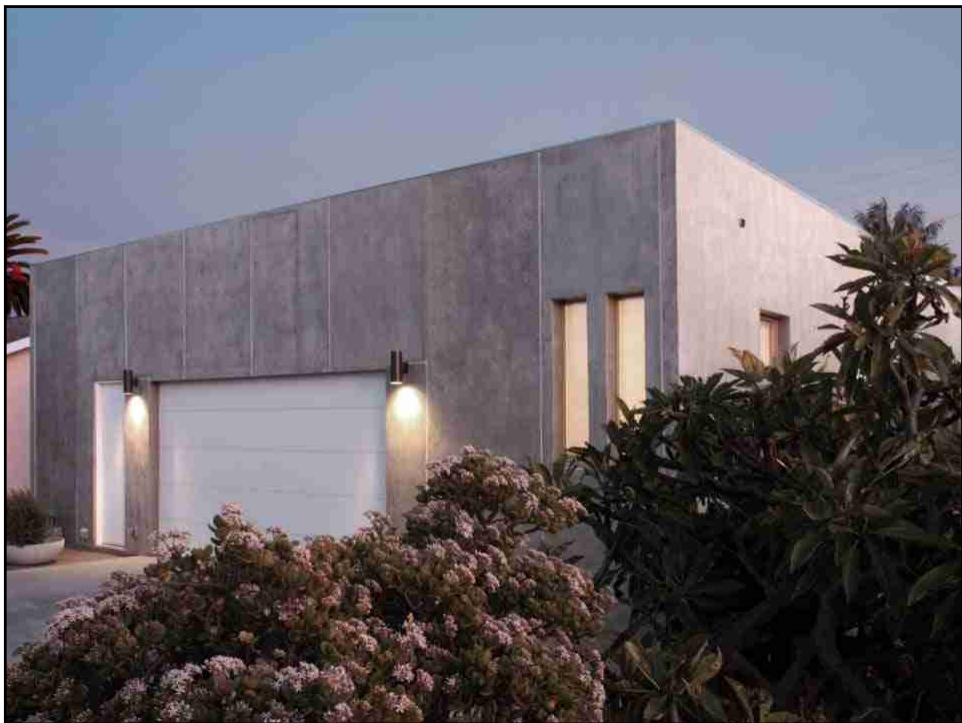


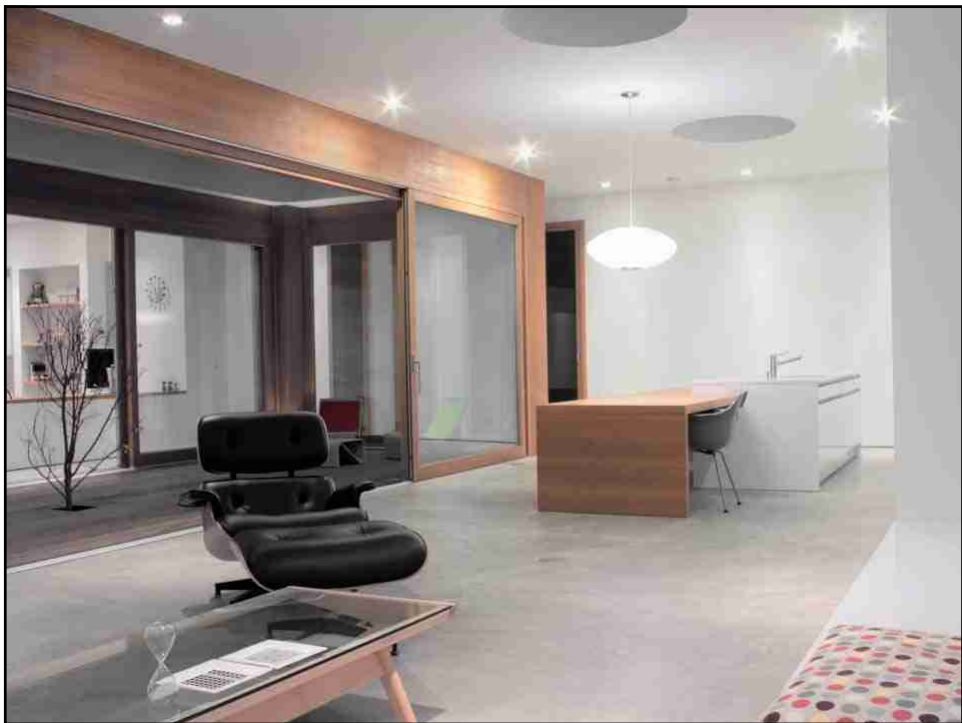
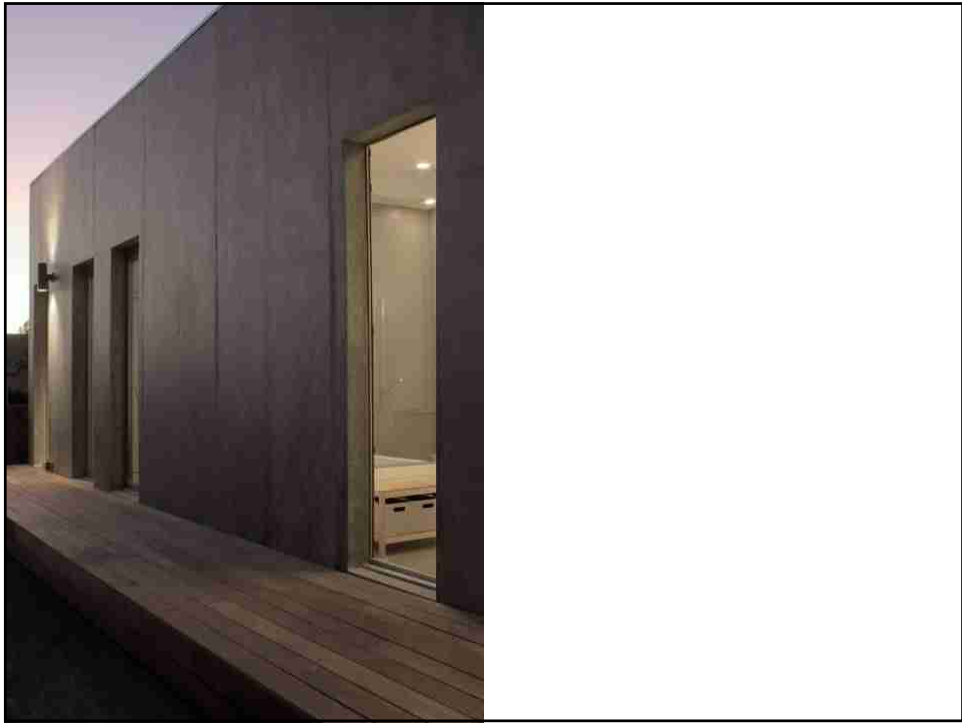


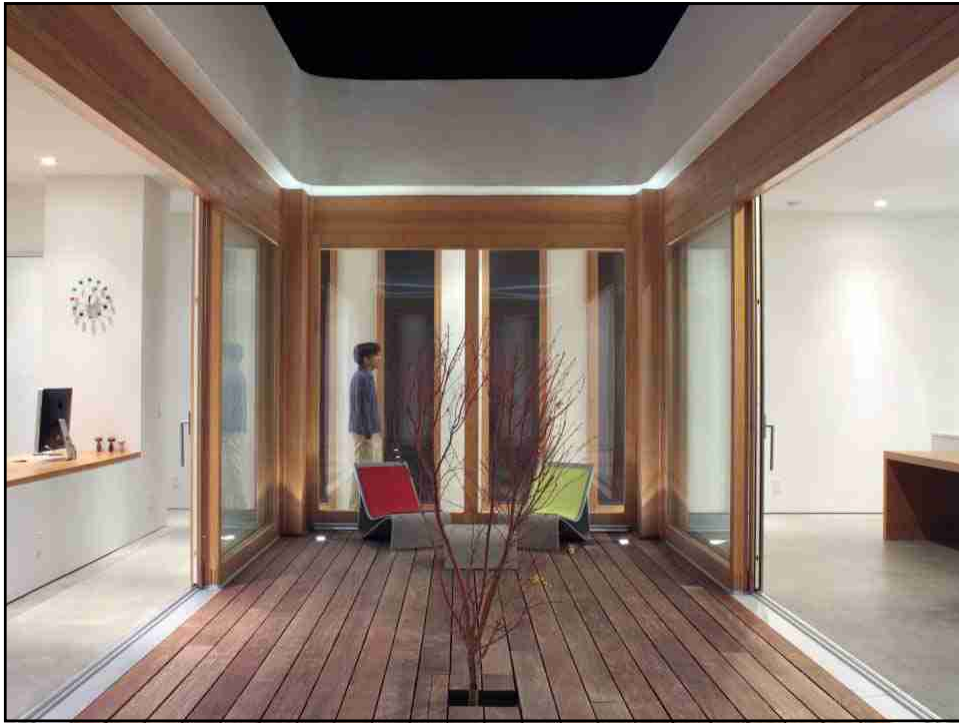








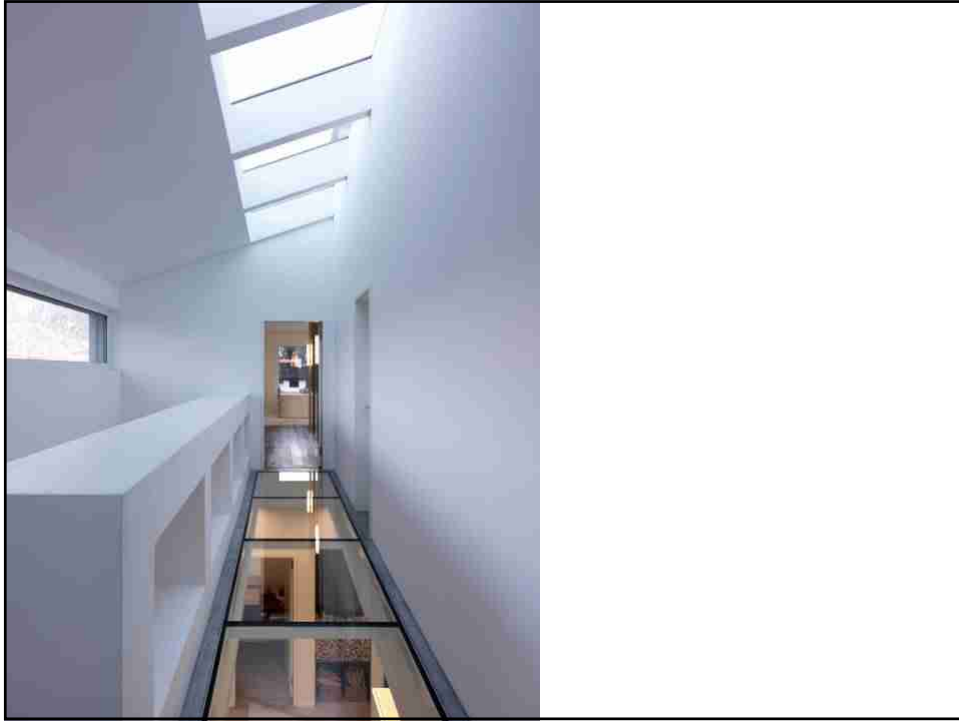




prefab / minergie

Switzerland





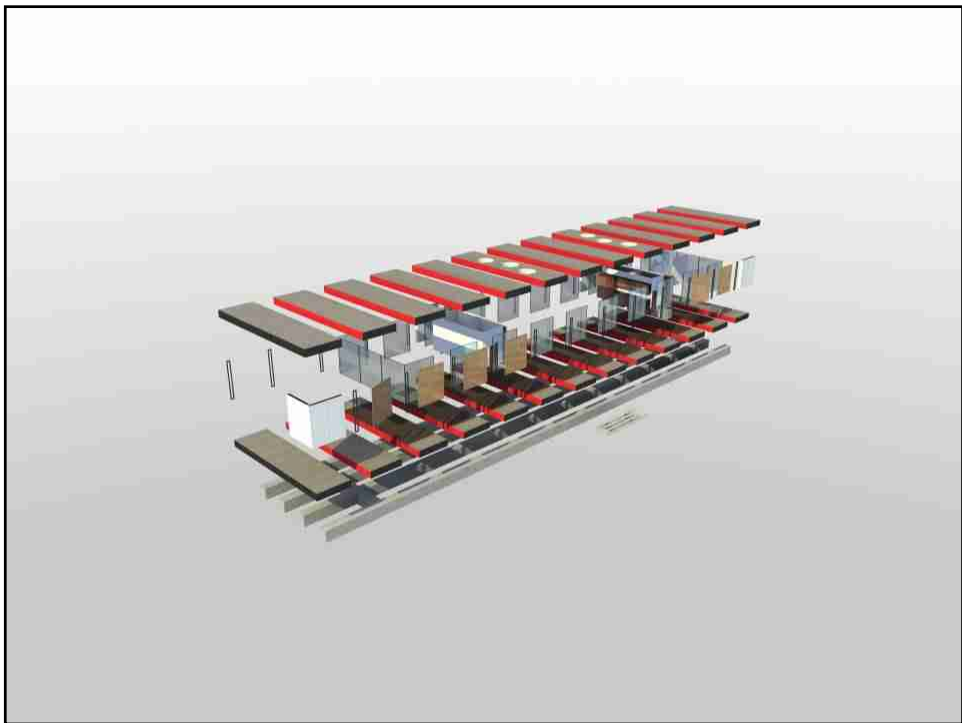








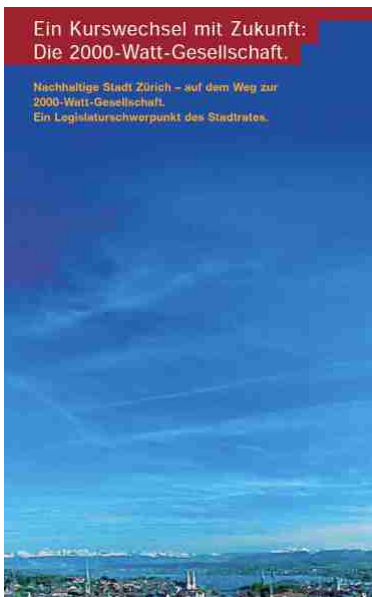






2000 watt-society

Switzerland



City of Zurich

"In November of 2008 the citizens of the city of Zurich approved a public initiative by 76% to make the 2000-Watt Society the energy vision for the city"

“How much energy is needed to sustain our quality of life with today’s known technology?”

“2000-Watt of continuous energy per person”

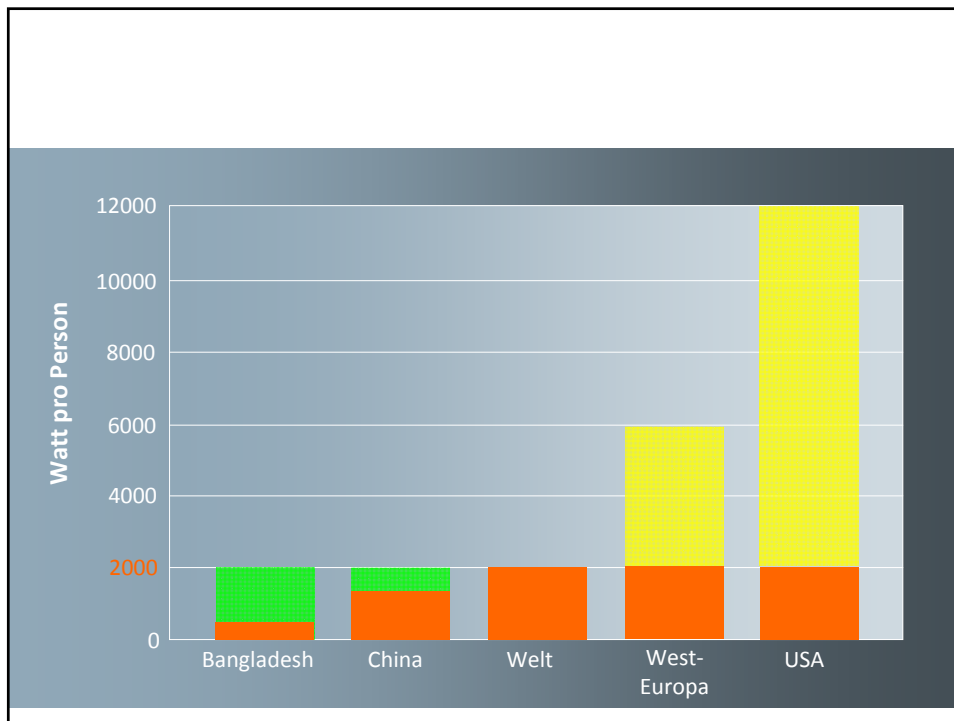
= 20 100W light bulbs burning continuously per person

= 17'500kWh per per person and year

= 462 gallon of gasoline per person and year



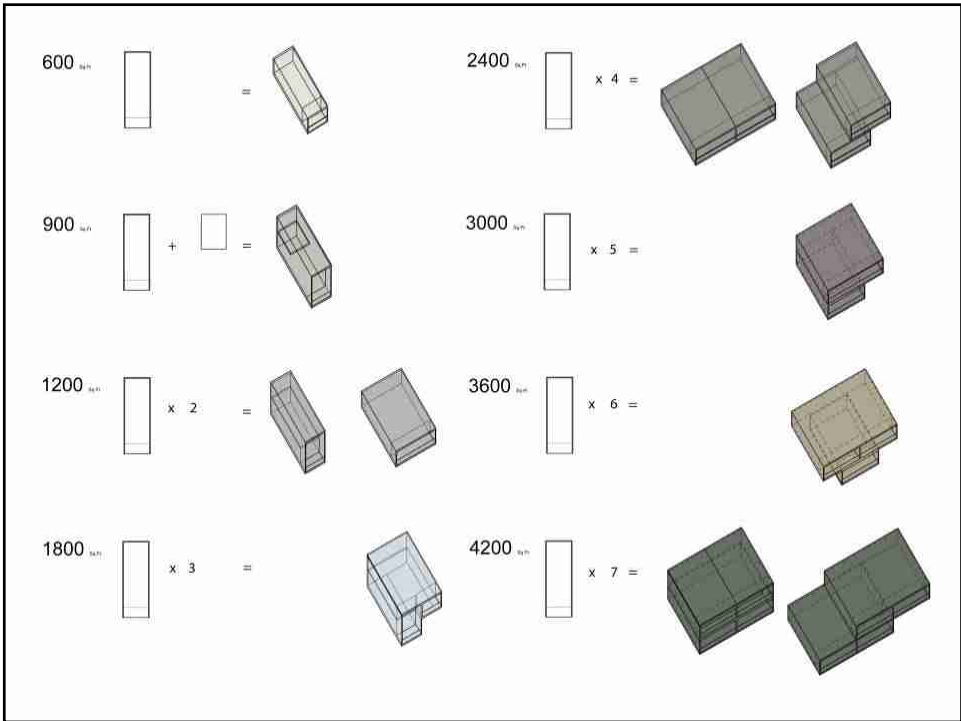
Slide 47



w h y

- Reduce the energy use per person / 2000 watt per person / per year
- Create a place where families can live / work
- Reduce traffic / cars
- Bring back families and social interaction / urban life
- Find a new use for old and run down neighborhoods







w h y

- The movement is already happening / can't be stopped
- Technologies are developed if not already existing
- Stimulates the innovations
- Creates *new ideas* and helps the economy
- Makes us more independent from foreign resources

